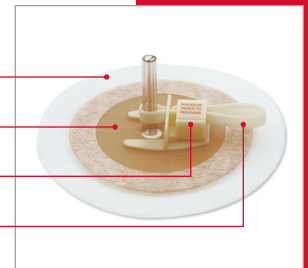


Vertical Tube Attachment Device (VTAD)

- Features an adjustable clamp with serrated strap that wraps around and holds the drain and tube
- Fits 5 to 40 French

Microporous Tape Border
FlexWear Skin Barrier
Adjustable Clamp
Serrated Strap



WARNING: To help ensure proper adhesion, do not reuse.

CAUTION: Do not pull the serrated strap too tightly as the pressure may cause occlusion in the drain/tube. Do not cut off excess strap, as this may inhibit removal of the device. Excess strap can be folded over and inserted into the latch. When using the attachment device, be sure to follow current standard clinical procedure for the placement, monitoring, and removal of percutaneous tubes.

Application

Before applying the attachment device, the tube site should be thoroughly rinsed with an appropriate cleansing solution. The skin should be clean and dry for secure application and fit. Do not use any lotions or emollients as the oily residue will interfere with the adhesion of the barrier.

Step 1 - Remove release liner (Figure 1)

Using sterile technique (when applicable), peel the release liner from the skin barrier on the underside of the attachment device.
DO NOT REMOVE THE RELEASE PAPER FROM THE TAPE BORDER.

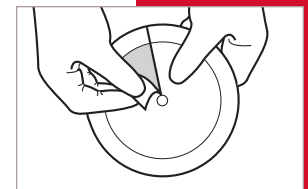


Figure 1

Step 2 - Insert tube (Figure 2)

Insert the tube through the starter slit in the skin barrier and position the tube in the starter hole.
NOTE: The pre-cut starter hole can be enlarged to accommodate larger tubes or skin openings. This should be done before the release paper is removed.



Figure 2

Step 3 - Adhere barrier to skin (Figure 3)

Press the barrier to the skin firmly, but gently, and smooth it to remove all wrinkles to ensure complete adhesion. Remove the release paper from the tape border and press tape to skin.

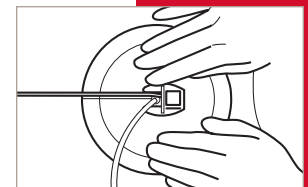


Figure 3

Step 4 - Insert the serrated strap (Figure 4)

Wrap the serrated strap around the tube and push the strap into the insertion slot in the latch. A portion of the serrated strap should protrude on the exit side of the latch.

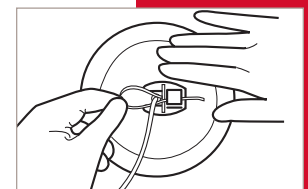


Figure 4

Step 5 - Secure the serrated strap (Figure 5)

Pull the serrated strap while pushing it from the other side until it fits snugly around the drain/tube. Be careful not to dislodge the attachment device or tube during this step. The serrated strap should squeeze the drain/tube slightly for maximum security.

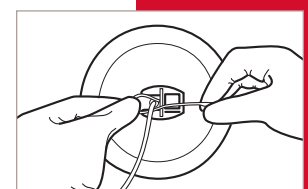


Figure 5

Removal

Step 1 - Release the drain/tube (Figure 6)

Release the drain/tube from the attachment device by pushing the serrated strap backwards while squeezing the sides of the latch. Pull the strap all the way back through the latch. Gently peel the barrier and tape from the patient's skin. Hold the drain/tube with one hand when removing the attachment device.

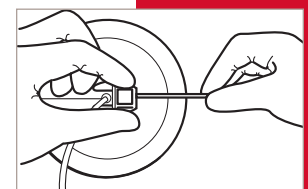


Figure 6

Prior to using the Vertical Tube Attachment Device (VTAD), be sure to read the entire product Instructions for Use that accompany the product.

TUBE ATTACHMENT DEVICE CARE TIPS

Vertical Tube Attachment Device (VTAD)

To view an instructional video for this product, please visit www.hollister.com



Hollister Incorporated
2000 Hollister Drive
Libertyville, Illinois 60048
1.800.323.4060

www.hollister.com

Hollister Limited
95 Mary Street
Aurora, Ontario L4G 1G3
1.800.263.7400