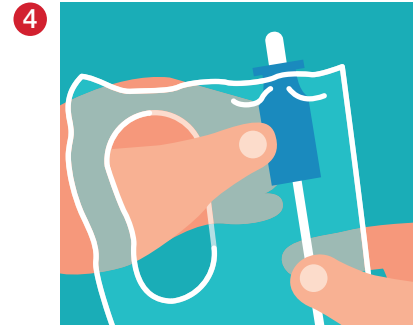
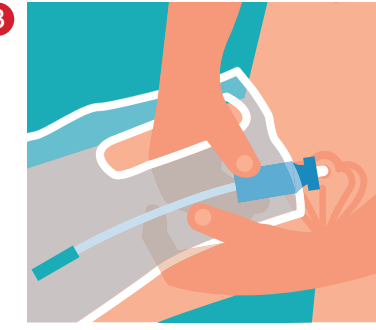


## Touch Free Intermittent Catheter System

## A photograph of three young girls lying on their stomachs on a grassy area, looking at a smartphone held by the girl in the middle. The girl on the left is wearing a denim jacket, the middle girl is wearing a red shirt, and the girl on the right is wearing a blue shirt. They are all smiling and looking at the screen. A large red semi-transparent shape is overlaid on the bottom left of the image.



*Hint: Don't squeeze the gel reservoir too hard. Also be sure the tip of the catheter doesn't poke out the top of the protective tip.*



**Hold the gel reservoir gently in place and advance the catheter until pee starts to fill the bag.** When the pee stops, slowly pull the catheter out. Pee may start to flow a little bit more. That is normal. Just pause and wait for the pee to stop again before removing the catheter.



**Wash your hands again with soap and water.**

Wash your hands again with soap and water.

The diagram shows the Advance Plus Intermittent Catheter system. It consists of a large, clear plastic collection bag with a large handle (labeled 'c') and a graduated scale from 100 to 1500 ml. A yellow catheter tube is connected to the bag. The tube has a blue gel reservoir (labeled 'b') and a red protective tip (labeled 'a'). A red cap is shown next to the tip. A smaller inset image shows the Advance Plus Intermittent Catheter packaging.

- a Touch Free Protective Tip
- b Gel Reservoir
- c Integrated Collection Bag with Large Handle

**c** Integrated Collection Bag with Large Handle