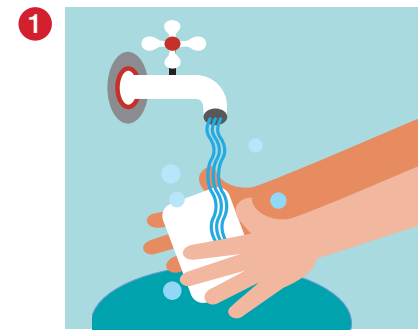


Touch Free Intermittent Catheter System

Touch Free Intermittent Catheter System

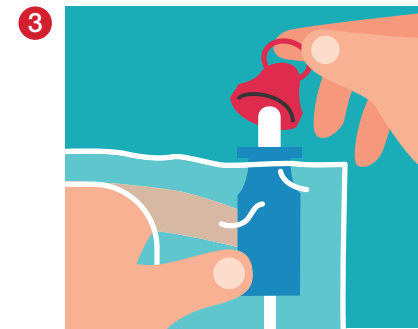
Boys' Guide for Use



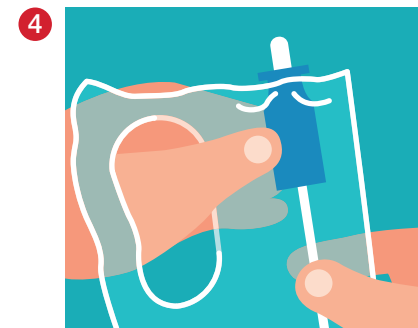
Wash hands with soap and water.



Open the package.
Fold back the packaging by peeling
on the side that is clear.



Remove the red cap from the protective tip of the catheter.

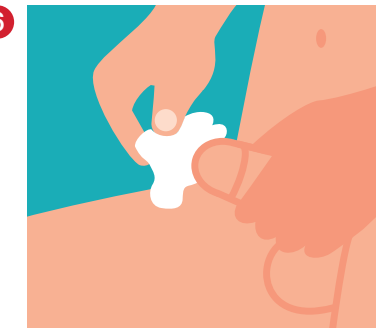


Hold the gel reservoir in one hand. With the other hand, move the catheter forward until the tip of the catheter moves up into the protective tip.

Hint: Don't squeeze the gel reservoir too hard. Also be sure the tip of the catheter doesn't poke out the top of the protective tip.

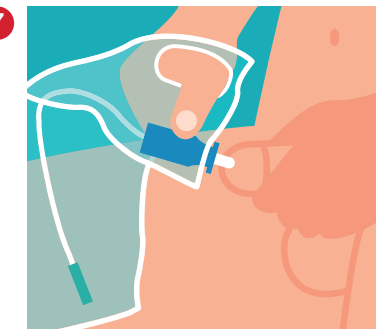


Lay the catheter on the opened package, so the tip is positioned over the paper.

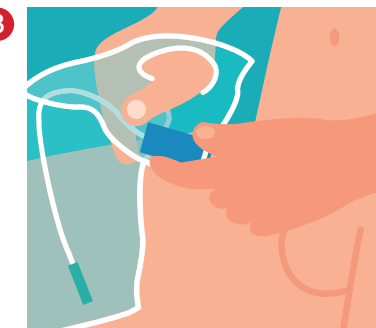


Hold your penis, and pull back the foreskin (if you have one). Clean the tip of your penis with soap and water, or a cleansing wipe.

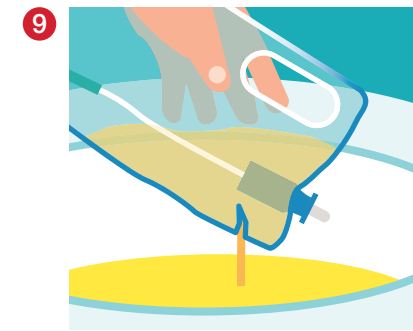
Hint: Don't squeeze your penis too hard. This can block the opening and make it difficult to insert the catheter.



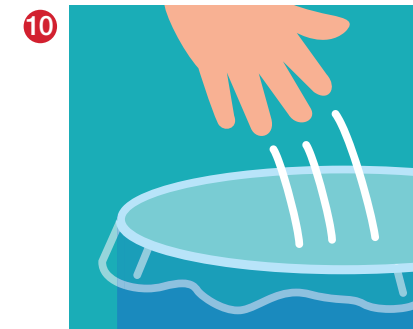
Lift your penis upward. Gently insert the protective tip until the base comes in contact with the opening of your penis. Keep the protective tip in place. Relax the foreskin (if you have one).



Hold the gel reservoir gently in place and advance the catheter until pee starts to fill the bag. When the pee stops, slowly pull the catheter out. Pee may start to flow a little bit more. That is normal. Just pause and wait for the pee to stop again before removing the catheter.



Tear the collection bag at the marked spot at the top and drain the pee into the toilet.



Throw the catheter away in the garbage. Do not flush it down the toilet.



Wash your hands again with soap and water.

This intermittent catheter is a flexible tubular device that is inserted through the urethra by male, female, and pediatric patients who need to drain urine from the bladder.

WARNING: To help reduce the potential for infection and/or other complications, do not reuse. If discomfort or any sign of trauma occurs, discontinue use immediately and consult your healthcare practitioner.

PRECAUTION: Please consult a medical professional before using this product if any of the following conditions are present: Severed urethra, unexplained urethral bleeding, pronounced stricture, false passage, urethritis—inflammation of the urethra, prostatitis—inflammation of the prostate gland, epididymitis—inflammation of the epididymis (testicle tube). Self-catheterization should follow the plan of care and advice given by your healthcare practitioner and be carried out only in accordance with the instructions for use provided. Because catheterization frequency varies by person, the recommended frequency of your catheterization should be provided by your healthcare practitioner. For any other questions about your catheterization, please contact your healthcare practitioner.

CAUTION: RX ONLY. Federal (USA) Law restricts this device to sale by or on the order of a physician or other healthcare practitioner licensed under state law to order this product. Prior to use of this device, be sure to read (i) the complete information on how to use this device including Warnings, Cautions, and Instructions for Use, and (ii) all other package inserts and labels supplied with the product.

The Hollister logo and Advance Plus are trademarks of Hollister Incorporated.
© 2019 Hollister Incorporated. AUHC220 October 2019



a Touch Free Protective Tip

b Gel Reservoir

c Integrated Collection Bag with Large Handle