

- enUrinary Night Drainage Bag
- arUrinary Night Drainage Bag
- esUrinary Night Drainage Bag
- fr-caUrinary Night Drainage Bag
- jaUrinary Night Drainage Bag



www.hollister.com/symbolglossary



enUrinary Night Drainage Bag

**Contents** (G6)

- Urinary night drainage bag with attached tubing with sterile fluid pathway
- Built-in hanger fixation

**Product Description:** (G25)

Urinary night drainage bag with drain tap, extension tubing and built-in hanger fixation. Designed to be emptied. Extension tubing has a sample port for urine sampling. The extension tubing diverts urine from a sheath (catheter) to the urinary night drainage bag. Built-in hanger fixation supports the urinary night drainage bag on a stand or bed frame.

Product is made of Polyvinylchloride (PVC) and polypropylene.

**Indications and Intended Use:** (G53)

A urinary night drainage bag collects and contains urine for individuals with urinary incontinence.

**WARNINGS** (W1)

To help reduce the potential for infection and/or other complications, do not reuse. (W11) Reprocessing, cleaning, disinfection, and sterilization may compromise the product. This may result in odor or leakage. (W3) The fluid pathway is only sterile with protective caps intact and in place.

**Notes:** (N1)

Contact a healthcare practitioner for help with continence care products. (CN5) In case of serious injury (incident) in relation to your use of the product, please contact your local distributor or manufacturer and your local competent authority. For more information, see www.hollister.com/authority or contact EC Rep or local distributor. (N6)

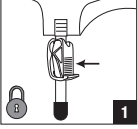
Not made with natural rubber latex. (S5)  
CE mark as required (S6)

Number of Units (S10)

MD Medical Device (as applicable). (S12)

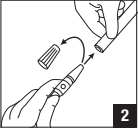
INSTRUCTIONS FOR USE: (G1)

Applying the urinary night drainage bag



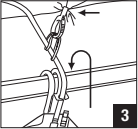
1

Ensure the drain tap is closed. (CG122)



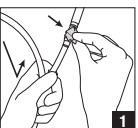
2

Remove cap from stepped mount connector if present. Connect the stepped mount connector to the sheath (catheter). Make sure tubing is not kinked or obstructed. (CG123)

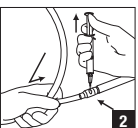


3

Place the built-in hanger fixation on stand or bed frame. Tubing may be supported using the bedsheet clip.

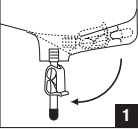


1

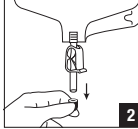


2

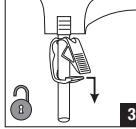
Drawing a urine specimen



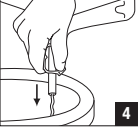
1



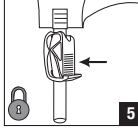
2



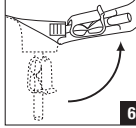
3



4



5



6

Draining the urinary night drainage bag

To remove and dispose (Please follow all local disposal regulations) (A7)

arUrinary Night Drainage Bag

**Contents** (G6)

- Urinary night drainage bag with attached tubing with sterile fluid pathway
- Built-in hanger fixation

**Product Description:** (G25)

Urinary night drainage bag with drain tap, extension tubing and built-in hanger fixation. Designed to be emptied. Extension tubing has a sample port for urine sampling. The extension tubing diverts urine from a sheath (catheter) to the urinary night drainage bag. Built-in hanger fixation supports the urinary night drainage bag on a stand or bed frame.

Product is made of Polyvinylchloride (PVC) and polypropylene.

**Indications and Intended Use:** (G53)

A urinary night drainage bag collects and contains urine for individuals with urinary incontinence.

**WARNINGS** (W1)

To help reduce the potential for infection and/or other complications, do not reuse. (W11) Reprocessing, cleaning, disinfection, and sterilization may compromise the product. This may result in odor or leakage. (W3) The fluid pathway is only sterile with protective caps intact and in place.

**Notes:** (N1)

Contact a healthcare practitioner for help with continence care products. (CN5) In case of serious injury (incident) in relation to your use of the product, please contact your local distributor or manufacturer and your local competent authority. For more information, see www.hollister.com/authority or contact EC Rep or local distributor. (N6)

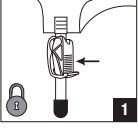
Not made with natural rubber latex. (S5)  
CE mark as required (S6)

Number of Units (S10)

MD Medical Device (as applicable). (S12)

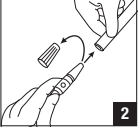
INSTRUCTIONS FOR USE: (G1)

Applying the urinary night drainage bag



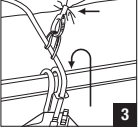
1

Ensure the drain tap is closed. (CG122)



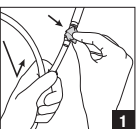
2

Remove cap from stepped mount connector if present. Connect the stepped mount connector to the sheath (catheter). Make sure tubing is not kinked or obstructed. (CG123)

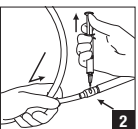


3

Place the built-in hanger fixation on stand or bed frame. Tubing may be supported using the bedsheet clip.

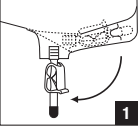


1

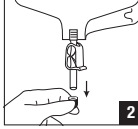


2

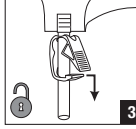
Drawing a urine specimen



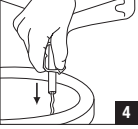
1



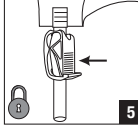
2



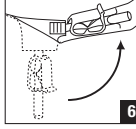
3



4



5



6

Draining the urinary night drainage bag

To remove and dispose (Please follow all local disposal regulations) (A7)

es

Urinary Night Drainage Bag

Contents (G6)

- Urinary night drainage bag with attached tubing with sterile fluid pathway
- Built-in hanger fixation

Product Description: (G25)

Urinary night drainage bag with drain tap, extension tubing and built-in hanger fixation. Designed to be emptied. Extension tubing has a sample port for urine sampling. The extension tubing diverts urine from a sheath (catheter) to the urinary night drainage bag. Built-in hanger fixation supports the urinary night drainage bag on a stand or bed frame.

Product is made of Polyvinylchloride (PVC) and polypropylene.

Indications and Intended Use: (G53)

A urinary night drainage bag collects and contains urine for individuals with urinary incontinence.

WARNINGS (W1)

To help reduce the potential for infection and/or other complications, do not reuse. (W11) Reprocessing, cleaning, disinfection, and sterilization may compromise the product. This may result in odor or leakage. (W3) The fluid pathway is only sterile with protective caps intact and in place.

Notes: (N1)

Contact a healthcare practitioner for help with continence care products. (CN5) In case of serious injury (incident) in relation to your use of the product, please contact your local distributor or manufacturer and your local competent authority. For more information, see [www.hollister.com/authority](http://www.hollister.com/authority) or contact EC Rep or local distributor. (N6)

Not made with natural rubber latex. (S5)

CE mark as required (S6)

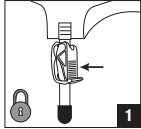
Number of Units (S10)

MD

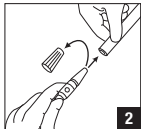
Medical Device  
(as applicable). (S12)

INSTRUCTIONS FOR USE: (G1)

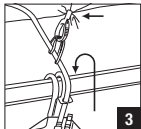
Applying the urinary night drainage bag



Ensure the drain tap is closed. (CG122)



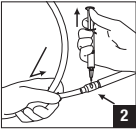
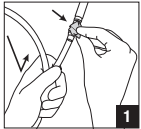
Remove cap from stepped mount connector if present. Connect the stepped mount connector to the sheath (catheter). Make sure tubing is not kinked or obstructed. (CG123)



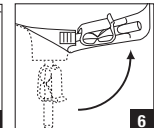
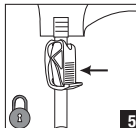
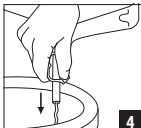
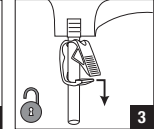
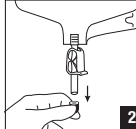
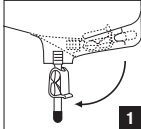
Place the built-in hanger fixation on stand or bed frame. Tubing may be supported using the bedsheet clip.

Please keep the bag off the floor. (CG151)

Drawing a urine specimen



Draining the urinary night drainage bag



To remove and dispose (Please follow all local disposal regulations) (A7)

fr-ca

Urinary Night Drainage Bag

Contents (G6)

- Urinary night drainage bag with attached tubing with sterile fluid pathway
- Built-in hanger fixation

Product Description: (G25)

Urinary night drainage bag with drain tap, extension tubing and built-in hanger fixation. Designed to be emptied. Extension tubing has a sample port for urine sampling. The extension tubing diverts urine from a sheath (catheter) to the urinary night drainage bag. Built-in hanger fixation supports the urinary night drainage bag on a stand or bed frame.

Product is made of Polyvinylchloride (PVC) and polypropylene.

Indications and Intended Use: (G53)

A urinary night drainage bag collects and contains urine for individuals with urinary incontinence.

WARNINGS (W1)

To help reduce the potential for infection and/or other complications, do not reuse. (W11) Reprocessing, cleaning, disinfection, and sterilization may compromise the product. This may result in odor or leakage. (W3) The fluid pathway is only sterile with protective caps intact and in place.

Notes: (N1)

Contact a healthcare practitioner for help with continence care products. (CN5) In case of serious injury (incident) in relation to your use of the product, please contact your local distributor or manufacturer and your local competent authority. For more information, see [www.hollister.com/authority](http://www.hollister.com/authority) or contact EC Rep or local distributor. (N6)

Not made with natural rubber latex. (S5)

CE mark as required (S6)

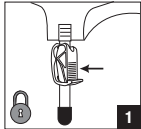
Number of Units (S10)

MD

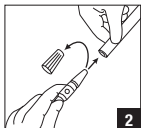
Medical Device  
(as applicable). (S12)

INSTRUCTIONS FOR USE: (G1)

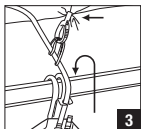
Applying the urinary night drainage bag



Ensure the drain tap is closed. (CG122)



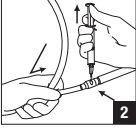
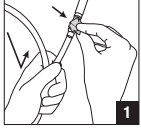
Remove cap from stepped mount connector if present. Connect the stepped mount connector to the sheath (catheter). Make sure tubing is not kinked or obstructed. (CG123)



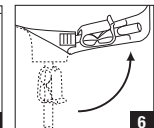
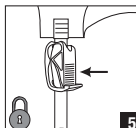
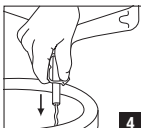
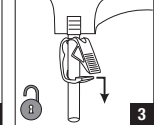
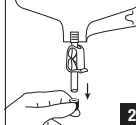
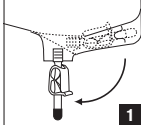
Place the built-in hanger fixation on stand or bed frame. Tubing may be supported using the bedsheet clip.

Please keep the bag off the floor. (CG151)

Drawing a urine specimen



Draining the urinary night drainage bag



To remove and dispose (Please follow all local disposal regulations) (A7)

ja

Urinary Night Drainage Bag

Contents (G6)

- Urinary night drainage bag with attached tubing with sterile fluid pathway
- Built-in hanger fixation

Product Description: (G25)

Urinary night drainage bag with drain tap, extension tubing and built-in hanger fixation. Designed to be emptied. Extension tubing has a sample port for urine sampling. The extension tubing diverts urine from a sheath (catheter) to the urinary night drainage bag. Built-in hanger fixation supports the urinary night drainage bag on a stand or bed frame.

Product is made of Polyvinylchloride (PVC) and polypropylene.

Indications and Intended Use: (G53)

A urinary night drainage bag collects and contains urine for individuals with urinary incontinence.

WARNINGS (W1)

To help reduce the potential for infection and/or other complications, do not reuse. (W11) Reprocessing, cleaning, disinfection, and sterilization may compromise the product. This may result in odor or leakage. (W3) The fluid pathway is only sterile with protective caps intact and in place.

Notes: (N1)

Contact a healthcare practitioner for help with continence care products. (CN5) In case of serious injury (incident) in relation to your use of the product, please contact your local distributor or manufacturer and your local competent authority. For more information, see [www.hollister.com/authority](http://www.hollister.com/authority) or contact EC Rep or local distributor. (N6)

Not made with natural rubber latex. (S5)

CE mark as required (S6)

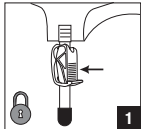
Number of Units (S10)

MD

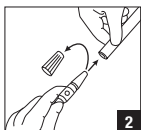
Medical Device  
(as applicable). (S12)

INSTRUCTIONS FOR USE: (G1)

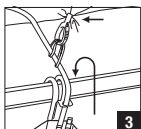
Applying the urinary night drainage bag



Ensure the drain tap is closed. (CG122)



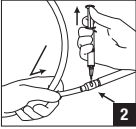
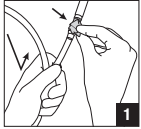
Remove cap from stepped mount connector if present. Connect the stepped mount connector to the sheath (catheter). Make sure tubing is not kinked or obstructed. (CG123)



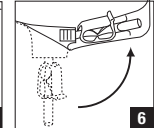
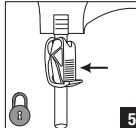
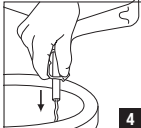
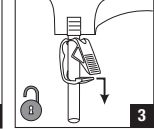
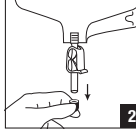
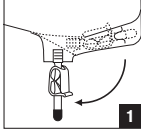
Place the built-in hanger fixation on stand or bed frame. Tubing may be supported using the bedsheet clip.

Please keep the bag off the floor. (CG151)

Drawing a urine specimen



Draining the urinary night drainage bag



To remove and dispose (Please follow all local disposal regulations) (A7)