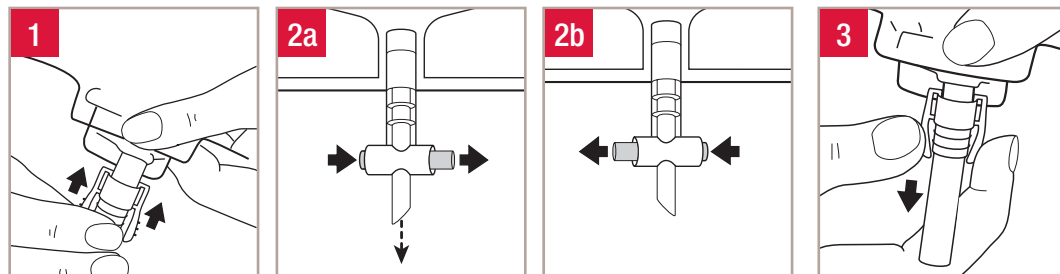


Hollister 5550 Night Drainage Collector

Instructions for Use



Connecting, Emptying and Removing the Night Drainage Bag

Connecting

Ensure the Urostomy pouch is empty before attaching the night drainage bag. Check that the outlet valve of the night drainage bag is closed. When facing the front of the night drainage bag, the blue valve is in the closed position when it is pushed fully to the left.

1. Push the connector of the outlet tube into the outlet valve of the Urostomy pouch.

A click indicates correct connection. Open the outlet valve of the Urostomy pouch so that the tear drop is visible. When lying down, place the outlet tube under the leg to allow the urine to run down.

Emptying

Ensure the tap of the Urostomy pouch is closed before removing the night drainage bag.

- 2a. When facing the front of the drainage bag, the blue valve should be pushed fully to the right to empty
- 2b. Once complete, return the valve to the closed position (pushed fully to the left).

Removing

3. Press the white connector of the outlet tube together with the thumb and forefinger. Hold the Urostomy pouch outlet valve and lightly pull the connector away

For more information or samples please call Customer Engagement on:

Australia **1800 219 179**
New Zealand **0800 678 669**

www.hollister.com

