

Hollister Night Drainage Bag Sterile (9650) Flip Tap

Guide for Use

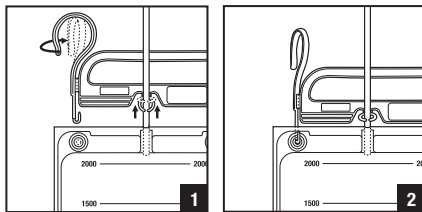
Applying the night drainage bag

Ensure the drain tap is closed. Remove cap from stepped mount connector if present. Connect the stepped mount connector to the sheath (catheter). Make sure tubing is not kinked or obstructed.



Applying the hanger fixation

Please keep the bag off the floor.

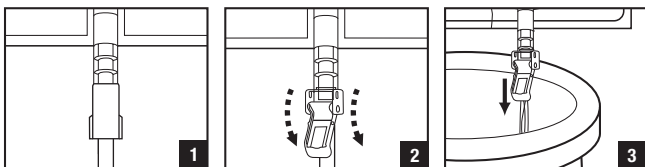


Draining the night drainage bag

Tap closed
(front facing)

Tap open
(front facing)

Drain into toilet or
other receptacle.



To remove and dispose

(Please follow all local disposal regulations)
Remove hanger fixation.

For more information or samples please call:

Australia Customer Care **1800 880 851**
www.hollister.com.au

New Zealand Customer Service **0800 678 669**
www.hollister.co.nz


Indications and Intended Use

A urinary night drainage bag collects and contains urine. The hanger is an accessory intended to secure a urinary night drainage bag to a bed frame or a stand. These accessory products are for individuals with urinary incontinence or a urinary stoma.

WARNINGS

- Disinfection and sterilisation may compromise the product. This may result in odour or leakage.

Precautions

 Single patient – multiple use. Sharing this product with multiple users creates a risk of infection.

Between uses, empty and rinse night drainage bag with lukewarm water or clean per healthcare professional recommendations. Hang to dry away from heat. Wipe outside of bag and tubing with damp cloth as needed. Clean the connector with an alcohol wipe before each use. Discard when visibly damaged or stained.

Notes

Contact a healthcare professional for help with continence care products. In case of serious injury (incident) in relation to your use of the product, please contact your local distributor or manufacturer and your local competent authority. For more information, see www.hollister.com/authority or contact your local distributor.

Hollister and logo are trademarks of Hollister Incorporated. © 2020 Hollister Incorporated. All rights reserved. Printed in Australia. HL010. May 2020.

Hollister Night Drainage Bag Sterile (9432), Non-Sterile (9431) T-Tap

Guide for Use

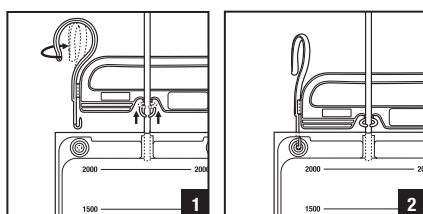
Applying the night drainage bag

Connect the stepped mount connector to the catheter or sheath. Using the hanger supplied, fix the Night Drainage Bag securely to stand/bed rail. Before connecting a Drainable Night Drainage Bag, ensure that the drain tap is closed.



Applying the hanger fixation

Please keep the bag off the floor.

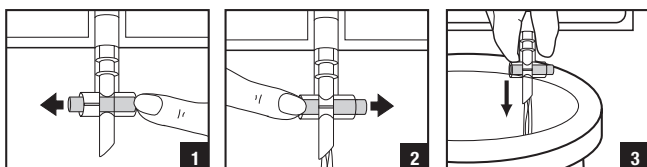


Draining the night drainage bag

Tap closed
(front facing)

Tap open
(front facing)

Drain into toilet or
other receptacle.



To remove and dispose

(Please follow all local disposal regulations)
Remove hanger fixation.

Indications and Intended Use

A urinary night drainage bag collects and contains urine. The hanger is an accessory intended to secure a urinary night drainage bag to a bed frame or a stand. These accessory products are for individuals with urinary incontinence or a urinary stoma.

WARNINGS

- Disinfection and sterilisation may compromise the product. This may result in odour or leakage.

Precautions



Single patient – multiple use. Sharing this product with multiple users creates a risk of infection.



Keep Dry



Not made with natural rubber latex



Do not use if package is damaged



Keep away from heat



9432 Do not resterilise

Notes

Contact a healthcare professional for help with continence care products. In case of serious injury (incident) in relation to your use of the product, please contact your local distributor or manufacturer and your local competent authority. For more information, see www.hollister.com/authority or contact your local distributor.

For more information or samples please call:

Australia Customer Care **1800 880 851**
www.hollister.com.au

Hollister and logo are trademarks of Hollister Incorporated. © 2020 Hollister Incorporated. All rights reserved. HL010. May 2020.