



# TAKING CARE OF YOU

.....  
**A Boys' Guide to Using a Catheter**  
.....

## Note to Parents



Teaching your son to self-catheterise is an important step in his development. Along with helping him grow his responsibilities, it's a big confidence booster as he matures and desires the independence all kids want. Being able to take care of his body gives him more freedom to be himself.

Learning new skills can be challenging, for both parents and kids. It's natural to question when your child is ready to take on self-catheterisation. The good news is, if your child can hold a pencil and write his name, he has the dexterity required to take this step. He can do it. And so can you.

Even when kids have learned the steps to self-catheterise, keeping track of time can be tricky. Gentle reminders from an adult or assistance setting an alarm on their phone or watch can be very helpful.

As always, if you have questions about creating a plan for your child, ask your paediatric team for help.

# DOING THE SAME THING DIFFERENTLY

Everyone goes to the bathroom. You might call it wee, or potty, or pee. It's what your nurse or doctor probably calls "urination."

Not everyone goes the same way. Some people go directly into the toilet. Others, like you, need to use a catheter.

A catheter simply helps you pee so your bladder doesn't get too full. Keeping your bladder from getting too full helps you stay healthy.

Until now, you've had people such as your parents, other family members, and nurses help you with your catheter. Now that you're growing up, it's time to learn to do this on your own.

## **FUN FACT:**

**If you can write your name with a pen or pencil, you already have all the skills you need to use your catheter yourself!**

---

**Won't it be great to take care of yourself?  
Think of all the things you can do with your friends.**



# WHY doesn't my bladder work?

Your bladder is an organ that talks with your brain.

When you eat and drink, the nutrients your body needs are absorbed into your bloodstream. Your kidneys are a filter that decides what you need and what you don't. The liquid your body can't use goes into your bladder.

When the bladder is full, it tells your brain that it's time to pee. If you use a catheter, that means the connection between your brain and your bladder isn't working.

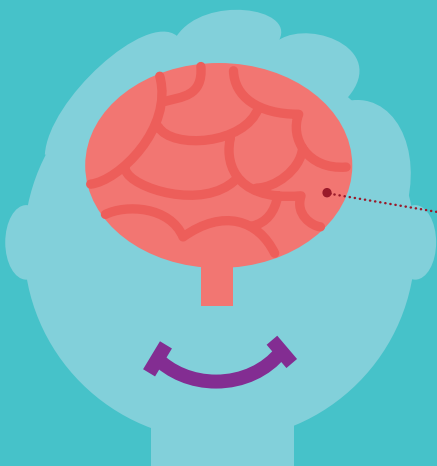
There are many reasons why kids and adults need to use catheters to help empty their bladders. ***You are not alone!***

---

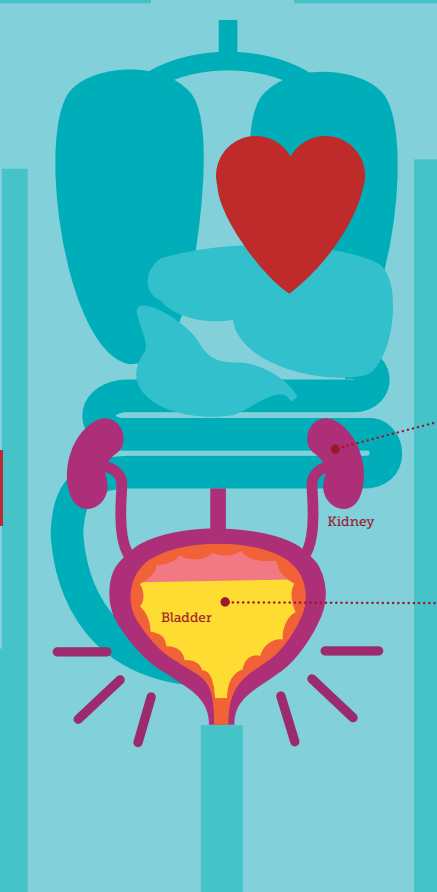
**VERY IMPORTANT! Taking care of your bladder means making sure it is emptied on a regular schedule, so it doesn't get too full.**

**You may not feel the need to pee so you need to empty your bladder by the clock.**





**If your brain can't talk to your bladder, your body doesn't know it's time to pee.**



If your bladder isn't emptied by the catheter, it can get too full. When it's full, the urine has no where to go and it creates pressure in your bladder than can hurt your kidneys.

Urine in your kidneys can make you sick. You can get a fever, an infection, and even end up in the hospital. Your catheter helps make sure that doesn't happen!

**If your bladder gets too full, your pee stays in your kidneys. And that can make you really sick.**

**Your bladder and your brain aren't able to talk to each other. So your bladder needs the help of a catheter to let the pee out.**



Hi. I'm a clock. And I'm a friend to your bladder. I help you remember to use your catheter, so you stay healthy!

7:00 am  
Pee!

8:00 am BREAKFAST

# MAKE TIME + KEEP TIME

Your bladder can't tell your brain when it's time to go. Letting too much time pass can lead to you getting sick. It's important to keep a set schedule for using your catheter. Every four hours is a good guide. Your nurse will help create the right schedule for you.

Noon LUNCH

11:00 am  
Pee!

9:00 am SCHOOL BEGINS

10:00 am RECESS

1:00 pm ARTS + CRAFTS

2:00 pm LIBRARY

With four hours in between emptying, you'll have plenty of time to hang out with your friends, go to the mall, play a game, or see a movie without missing a thing!

And if you know you'll be at longer events, you can adjust your schedule for it.

3:00 pm  
Pee!

4:00 pm MUSIC PRACTICE

There will be times you won't want to go—like if you're having fun, or busy at school.

5:00 pm DINNER

But even your friends who don't catheterise stop for bathroom breaks. Your catheter break might take a little longer, but the more you practice, the better you'll get at it.

7:00 pm  
Pee!



MOVIES

6:00 pm FUN WITH FRIENDS

**Remember, it's better to miss a few moments of play and stay healthy.**



# 4 STEPS

---

## TO SELF-CATHETERISATION

Ready to learn? There are four steps you will need to know. At first, it might seem like a lot. But don't worry. You can always get help, and before long you will get the hang of it.





☐ Soap



☐ Water



☐ Lubricant

This is the slippery gel or lotion you may use to help the catheter go in your body more easily.

Some catheters are already lubricated. Your nurse will help you learn what's best for you.



☐ Toilet or collection bag for your pee

STEP

1

## Get Prepared!

These are supplies you need to use your catheter. Many of these will already be handy in your bathroom.



☐ Washcloth or disposable wipes

### You can go on the go!

Create a self-catheter kit to carry with you when you're away from home. Always pack a few extra catheters. A pencil case or a plastic baggie can be a great holder for your supplies or contact Hollister for a free travel bag!

STEP

2

## Get Clean!

Staying clean helps protect against infection.

It's very important to keep your hands, the end of your penis, and the catheter clean when you insert. Wash your hands with soap and water or a cleaning wipe before unwrapping your catheter. Try not to touch the toilet, door handles or the faucet after you wash.

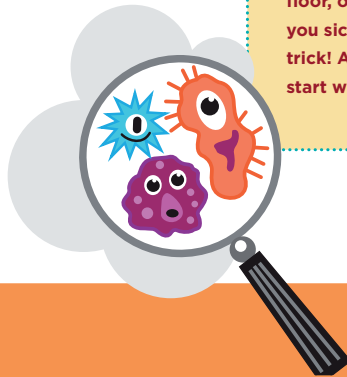
Before you insert the catheter, you can use a lubricant to make it extra slippery and easier to put in. Be careful, because your catheter might slip right out of your hands!

If you drop your catheter, it may come into contact with germs that can make you sick. If you drop it, re-wash your hands and use a new catheter.



### IMPORTANT!

Germs on your hands, the floor, or counter can make you sick—staying clean is the trick! Always wash up, and start with a fresh catheter.



STEP

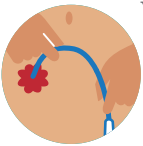
3

## Insert the Catheter!

After you've washed your hands and removed and lubricated the catheter from its wrapper, it's time to insert.

- Stand next to the toilet so it will be easy to empty your pee. You can also sit on the toilet, or stay right in your wheelchair.
- Gently slide the catheter into your penis. Go slowly. Sometimes, taking a deep breath can help relax your muscles.
- Be sure the other end is over the toilet or connected to a collection bag. When the catheter is all the way in, your bladder will start to empty.

### Do you pee a little differently?



You may have had an operation to create a small opening in your belly. This opening is called a stoma. To empty your bladder, you insert the catheter into your stoma, instead of your penis.



STEP



## Empty All the Way

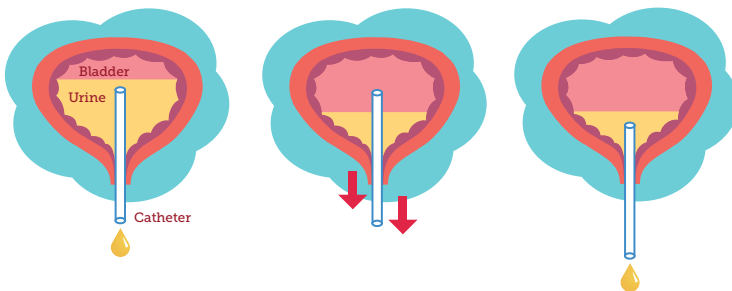
When the pee stops flowing into the toilet or your collection bag, slowly start to pull the catheter out.

If more pee starts coming, stop pulling and wait for the pee to finish.

When the pee stops coming out, slowly pull the catheter all the way out. Throw it away, clean the end of your penis (or the area around your stoma) with a wipe, and wash your hands. ***That's it. You've done it!***

### Why does more come out after I start to pull the catheter out?

Your catheter enters the bladder from the bottom. If the catheter is too far up, the pee can't reach it to drain out. If you pull the catheter down just a little, the pee will drain when the catheter dips back in it. So that's why it's smart to go slow and make sure all the pee is done before you finish.



# BECOMING AN EXPERT

Pretty soon, you'll know all there is to know about your catheter and emptying your bladder. Until then, it's normal to have questions or feel a bit uncertain. You are learning something new. Be patient. And remember you are not alone.

**Do I need to set my alarm to empty in the middle of the night?**

Because you're not eating or drinking while you're asleep, your kidneys make less pee. What does fill up in your bladder can often wait until you wake up in the morning. But, it helps to avoid drinking large amounts of liquid right before bed, and always remember to pee before you say goodnight.

**I'm scared to try something new.**

Your catheter might feel strange at first, but practice makes perfect! Sometimes it helps to relax and take a deep breath like you're blowing out your birthday candles.

---

**Find more answers to your questions on the next page...**

**I noticed that I have a little pee in my underwear in between bathroom visits.**

That can happen sometimes. Make sure you are not waiting too long to empty your bladder. Remember the most important thing is to stick to your catheter schedule. If you are noticing more dribbling than usual, tell your parent or guardian right away.

**NEWS FLASH!**

Tell your mum, dad, guardian, or nurse right away if you notice any of these signs:

- Burning feeling when you pee
- You notice blood in your pee
- You feel like you need to pee more often than usual, or feel pressure in your body

**Do I have to tell people I use a catheter?**

Only if you want to. It's a good idea to let your teacher or school nurse know about your special pee routine. They can be available to help you if you need it.

Some kids like to tell their friends—some don't. There is no right answer. No one can tell that you pee with a catheter by looking at you. It's up to you if you want to share.

---

**CONGRATULATIONS! Now you know how to use your own catheter. Every day that you practice, you will get better and better. As you get more comfortable using your catheter, you will do lots of new things on your own. Keep up the good work!**

# Bladder Diary

## Important – please read carefully

It is important that you fill in the chart on the next page to monitor your progress with intermittent catheterisation. It is designed to give an idea of your average liquid intake, urine output and any leakage during the day. This is important to your healthcare professional.

Each day, record how much you drink (see pictures below for a guide of how many mls) and when you drink it (put the volume in the box provided for that time). If you often drink from the same or similar sized cups, then you need only measure how much it holds once and put that value down every time you drink from it, otherwise use our guide for the amount in mls.

When you go to the toilet, measure the urine you pass using a small jug. Record the volume in mls. Record it in the box next to the nearest hour in the 'out' column.

When you use the catheter, measure the amount of urine drained and place in the column marked 'catheter'.

When you go to bed put a 'B' on the chart next to the right time, so that we can tell how many times you have to get up at night to pass urine.

If you are unable to fill the chart in properly every day because of other commitments, please try to fill it in accurately for at least 2 days by measuring and recording the frequency of passing urine and leaking by ticking the correct boxes for the remaining days.

## Example of correctly completed section:

**Name:** Henry Star **Week commencing:** 26/01/2022  
Please see instructions on the previous page

Day 1 Date: 26/01/2022				Day 2 Date: 27/01/2022				Day 3 Date:			
Time	In	Out	Catheter	Time	In	Out	Catheter	Time	In	Out	Catheter
7am				7am				7am			
8am				8am				8am			
9am				9am				9am			
10am				10am				10am			
11am				11am				11am			
12pm				12pm				12pm			
1pm				1pm				1pm			
2pm				2pm				2pm			
3pm				3pm				3pm			
4pm				4pm				4pm			
5pm				5pm				5pm			
6pm				6pm				6pm			
7pm				7pm				7pm			
8pm				8pm				8pm			
9pm				9pm				9pm			
10pm				10pm				10pm			
11pm				11pm				11pm			
12am				12am				12am			
1am				1am				1am			
2am				2am				2am			
3am				3am				3am			
4am				4am				4am			
5am				5am				5am			
6am				6am				6am			
7am				7am				7am			
8am				8am				8am			
9am				9am				9am			
10am				10am				10am			
11am				11am				11am			
12pm				12pm				12pm			
1pm				1pm				1pm			
2pm				2pm				2pm			
3pm				3pm				3pm			
4pm				4pm				4pm			
5pm				5pm				5pm			
6pm				6pm				6pm			
7pm				7pm				7pm			
8pm				8pm				8pm			
9pm				9pm				9pm			
10pm				10pm				10pm			
11pm				11pm				11pm			
12am				12am				12am			
1am				1am				1am			
2am				2am				2am			
3am				3am				3am			
4am				4am				4am			
5am				5am				5am			
6am				6am				6am			
7am				7am				7am			
8am				8am				8am			
9am				9am				9am			
10am				10am				10am			
11am				11am				11am			
12pm				12pm				12pm			
1pm				1pm				1pm			
2pm				2pm				2pm			
3pm				3pm				3pm			
4pm				4pm				4pm			
5pm				5pm				5pm			
6pm				6pm				6pm			
7pm				7pm				7pm			
8pm				8pm				8pm			
9pm				9pm				9pm			
10pm				10pm				10pm			
11pm				11pm				11pm			
12am				12am				12am			
1am				1am				1am			
2am				2am				2am			
3am				3am				3am			
4am				4am				4am			
5am				5am				5am			
6am				6am				6am			
7am				7am				7am			
8am				8am				8am			
9am				9am				9am			
10am				10am				10am			
11am				11am				11am			
12pm				12pm				12pm			
1pm				1pm				1pm			
2pm				2pm				2pm			
3pm				3pm				3pm			
4pm				4pm				4pm			
5pm				5pm				5pm			
6pm				6pm				6pm			
7pm				7pm				7pm			
8pm				8pm				8pm			
9pm				9pm				9pm			
10pm				10pm				10pm			
11pm				11pm				11pm			
12am				12am				12am			
1am				1am				1am			
2am				2am				2am			
3am				3am				3am			
4am				4am				4am			
5am				5am				5am			
6am				6am				6am			
7am				7am				7am			
8am				8am				8am			
9am				9am				9am			
10am				10am				10am			
11am				11am				11am			
12pm				12pm				12pm			
1pm				1pm				1pm			
2pm				2pm				2pm			
3pm				3pm				3pm			
4pm				4pm				4pm			
5pm				5pm				5pm			
6pm				6pm				6pm			
7pm				7pm				7pm			
8pm				8pm				8pm			
9pm				9pm				9pm			
10pm				10pm				10pm			
11pm				11pm				11pm			
12am				12am				12am			
1am				1am				1am			
2am				2am				2am			
3am				3am				3am			
4am				4am				4am			
5am				5am				5am			
6am				6am				6am			
7am				7am				7am			
8am				8am				8am			
9am				9am				9am			
10am				10am				10am			
11am				11am				11am			
12pm				12pm				12pm			
1pm				1pm				1pm			
2pm				2pm				2pm			
3pm				3pm				3pm			
4pm				4pm				4pm			
5pm				5pm				5pm			
6pm				6pm				6pm			
7pm				7pm				7pm			
8pm				8pm				8pm			
9pm				9pm				9pm			
10pm				10pm				10pm			
11pm				11pm				11pm			
12am				12am				12am			
1am				1am				1am			
2am				2am				2am			
3am				3am				3am			
4am				4am				4am			
5am				5am				5am			
6am				6am				6am			
7am				7am				7am			
8am				8am				8am			
9am				9am				9am			
10am				10am				10am			
11am				11am				11am			
12pm				12pm				12pm			
1pm				1pm				1pm			
2pm				2pm				2pm			
3pm				3pm				3pm			
4pm				4pm				4pm			
5pm				5pm				5pm			
6pm				6pm				6pm			
7pm				7pm				7pm			
8pm				8pm				8pm			
9pm				9pm				9pm			
10pm				10pm				10pm			
11pm				11pm				11pm			
12am				12am				12am			
1am				1am				1am			
2am				2am				2am			
3am				3am				3am			
4am				4am				4am			
5am				5am				5am			
6am				6am				6am			
7am				7am				7am			
8am				8am				8am			
9am				9am				9am			
10am				10am				10am			
11am				11am				11am			
12pm				12pm				12pm			
1pm				1pm				1pm			
2pm				2pm				2pm			
3pm				3pm				3pm			
4pm				4pm				4pm			
5pm				5pm				5pm			
6pm				6pm				6pm			
7pm				7pm				7pm			
8pm				8pm				8pm			
9pm				9pm				9pm			
10pm				10pm				10pm			
11pm				11pm				11pm			
12am				12am				12am			
1am				1am							

**Name:** \_\_\_\_\_

**Week commencing:** \_\_\_\_\_

*Please see instructions on the previous page.*

Day 1				Day 2				Day 3			
Date:				Date:				Date:			
Time	In	Out	Catheter	In	Out	Catheter	In	Out	Catheter		
1am											
2am											
3am											
4am											
5am											
6am											
7am											
8am											
9am											
10am											
11am											
12pm											
1pm											
2pm											
3pm											
4pm											
5pm											
6pm											
7pm											
8pm											
9pm											
10pm											
11pm											
12am											
Total											



## Date:

Date:

## Date:

Date:

## Date:

Date:

Time

1am
2am
3am
4am
5am
6am
7am
8am
9am
10am
11am
12pm
1pm
2pm
3pm
4pm
5pm
6pm
7pm
8pm
9pm
10pm
11pm
12am

Total

# Kid's Guide to using a Catheter has an app.

The app is a companion to this Catheterisation Booklet (Taking Care of You) and is designed for children ages 6-12 learning to self-catheterise.

It can also help to reassure parents that kids can learn to self-catheterise.

Please download to complement the expert care you are providing and to help build confidence and independence.

The app provides an interactive and fun learning experience, while teaching the importance of emptying the bladder on a set schedule and the simple steps to follow.

The app is supported by an unrestricted educational grant from Hollister Incorporated.

This app is for informational purposes only. The information provided is not medical advice or a substitute for professional medical advice, treatment or diagnosis.

## Apple

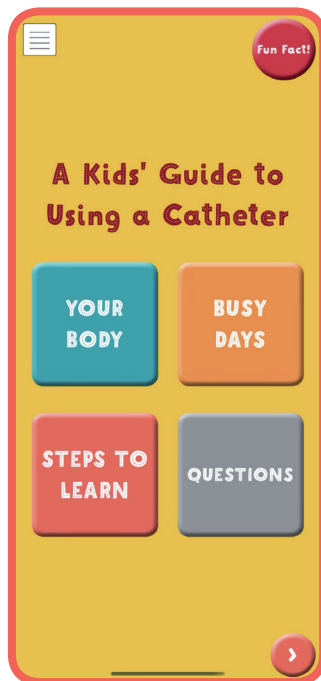
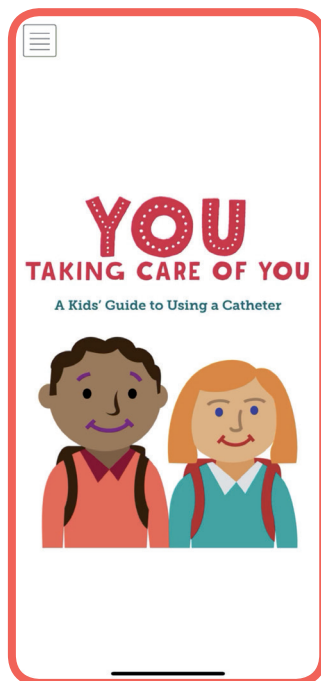


<https://qr.hollister.com/Stku>

## Google Android



<https://qr.hollister.com/6MdP>





## **Hollister Incorporated**

### **Australia**

[www.hollister.com.au](http://www.hollister.com.au)

Customer Care  
1800 880 851

### **New Zealand**

[www.hollister.co.nz](http://www.hollister.co.nz)

Customer Service  
0800 678 669